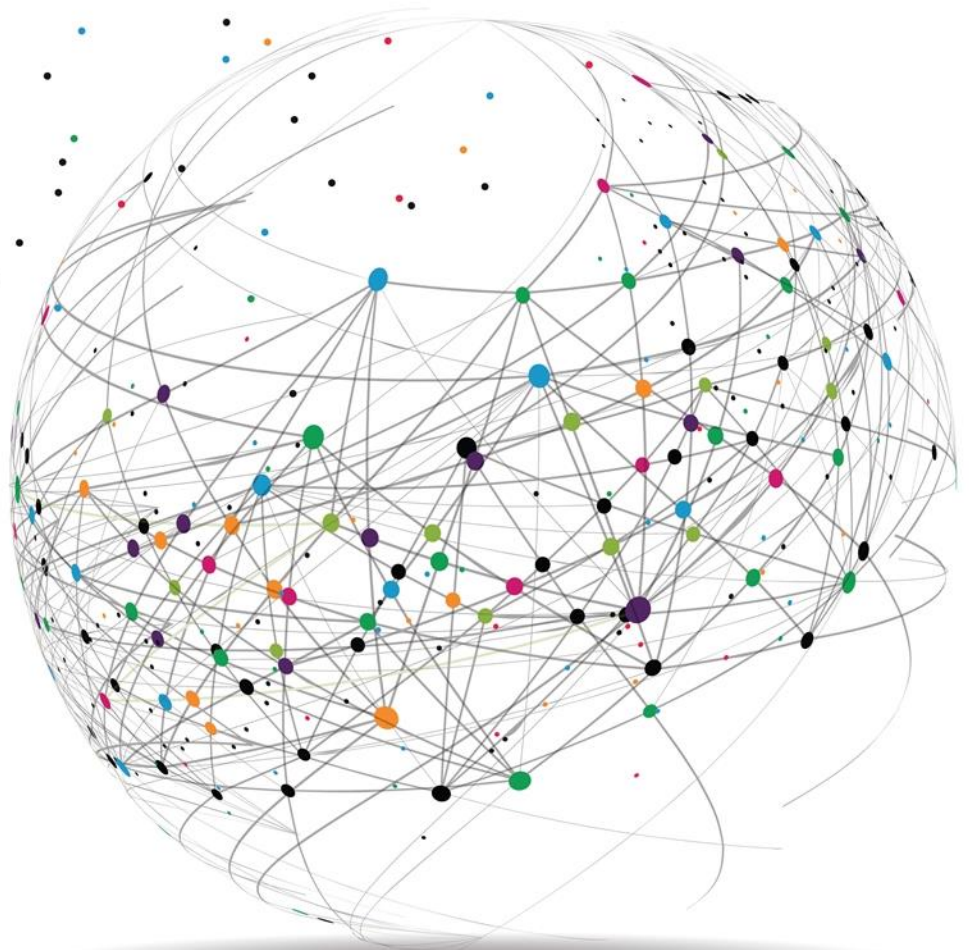


HANSE SURVEILLANCE SOLUTIONS

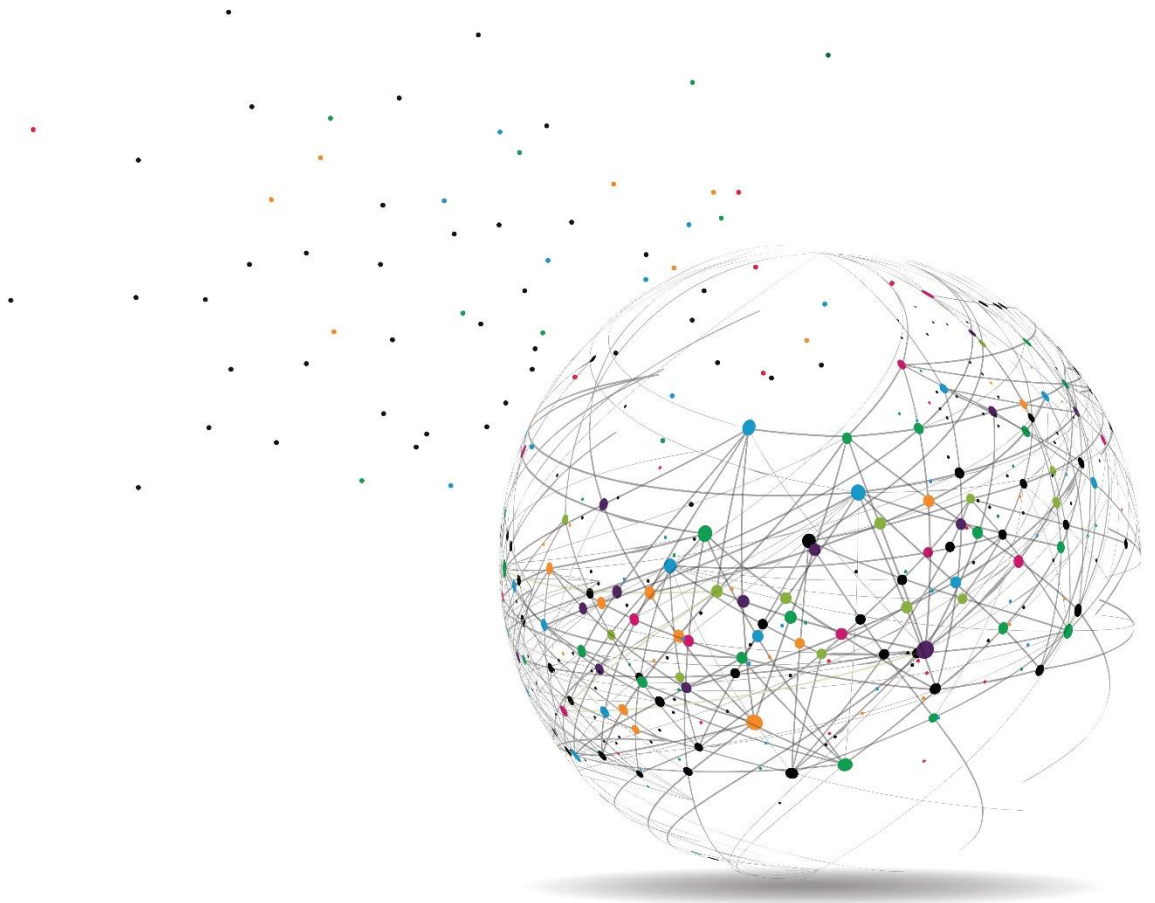
# 2019 DVR/NVR CATALOGUE



**HANSE**

**HANSE**

**DVR**



# HD ANALOG DVR

# HVR-F7 series

TVI/AHD/Analog camera support  
 Over 400m transmission with 5c-2v cable  
 ezP2P™ Cloud Service without any complicated network setting  
 ezLink™ for Instant Live Monitoring with Mac Address Input  
 2 x Typical PUSH Functions  
 -PUSH Video Call to iPhone/iPad & Android Phone  
 -PUSH Network Connection under Sensor Event  
 POS Function up to 4 sets of POS Devices  
 Startup Wizard for Easy Configuration  
 Remote Monitoring by Remote S/W(CMS) & Smart Phone  
 Talk-Back Function for 2-way communication with Smart Phone



[HVR-F704]



[HVR-F708/716]

MODEL		HVR-F704 (4 Ch)	HVR-F708 (8 Ch)	HVR-716 (16 Ch)
Compression Algorithm		Video : H.264, Audio : ADPCM		
Max. HDD Bay		1 x SATA HDD	2 x SATA HDD	4 x SATA HDD
Operating System		Embedded Linux		
Video	Input	4 Ch	8 Ch	16 Ch
	Format	TVI, AHD, ANALOG		
	Loop-Out	Not Available		
Video Mode		NTSC/PAL Selectable		
Live Display (NTSC/ PAL)		120/100 fps	240/200 fps	480/400 fps
Screen Modes for Live Display		1 & 4	1, 4 & 9	1, 4, 9 & 16
Video-Out	Monitor	VGA & HDMI & Spot (or VGA & HDMI & Composite)		
	Resolution	HDMI: 800x600, 1024x768, 1280x1024, 1920x1080 (Selectable)		
Recording Speed (HD, NTSC/PAL)	352x240/288(CIF)	120/100 fps	240/200 fps	480/400 fps
	960x480/576(960H)	120/100 fps	240/200 fps	480/400 fps
	1280x720 (HD)	96/100 fps	192/200 fps	384/400 fps
	1920x1080 (HD)	48/50 fps	96/100 fps	192/200fps
Recording Resolution		HD : 1280x720, 1920x1080 NTSC : 352x240, 720x240, 720x480, 960x480, PAL : 352x288, 720x288, 720x576, 960x576		
Recording Modes		Continuous, Scheduled, Sensor-Activated & Motion Detection Recording Pre & Post Alarm Recording, Emergency Recording, Quick Backup		
Playback & Search	Speed	x1, x2, x4, x8, x16, x32		
	Ch & Resolution	1, 4, 9 & 16 Ch at 1080P (1920 x 1080)		
	Function	Intelli-Search by Time Bar, Calendar (Date & Time) and Event Search		
Audio Input / Output		1 Ch / 1 Ch		
Alarm Input / Relay Output		4 Ch / 1 Ch		
P/T/Z Control (RS-485)		Virtual Joy-Stick Control on screen by Mouse Pan/Tilt/Zoom/Focus/Iris by Keyboard		
LAN		Gigabit Ethernet (RJ45) Fixed IP, DHCP & DDNS		
Network Function		1) Dual-Stream (Local Recording & Network Transmission) 2) Network Bandwidth Control (25 Kbps ~ 1000 Mbps) 3) Live Monitoring, Remote Playback and File Backup (Triplex-on-Remote) 4) Time Synchronization by NTP Server ("pool.ntp.org") 5) Remote & E-Mail Notification, Remote System Reboot by IE, Remote PTZ Control 6) P2P Cloud Service (Auto Port forwarding)		
Remote Management	Software	CMS & MMS (MV3000)		
	Web (IE)	Live Monitoring, Playback & System Configuration		
Backup Device	Internal	Not Available		
	External	Local Backup by USB ODD, Network Backup by CMS, File Upload to FTP Server		
System Recovery after Power Failure		Auto-Reboot and Journaling File System		
Advanced Functions		1) Firmware Upgrade by USB & CMS over Network 2) Import & Export of Setting Value, Water-Mark, AVI File Backup 3) Quick Setup to designate Recording Period 4) HDD SMART Info (Model, Capacity, Bad Sector, Temperature, Used Period) 5) Warning Alarm for System Over-Temperature 6) Help Message for easy setup & Multi-Language support 7) Digital Zoom for both Live & VOD mode		
POS		Text-in Based (USB to Serial support, TCP/IP Network) / Display POS Data on Live & Playback		
System Operation		Front Button, IR Remote Controller, USB Mouse, Keyboard (Option)		
Power		12V x 3A D/C	12V x 5A D/C	12V x 5A D/C
Operating Temperature and Humidity		5~40 °C / 20~90% RH		
Dimension (WxDxH)		264 x 245 x 44 (mm)	360 x 380 x 66 (mm)	
Certification		CE & FCC & KCC & WEEE, RoHS		

(\*) Specification is subject to change without prior notice.



# EX-SDI DVR

# HVR-FE series

- 2MP Camera Supported
- Over 400m transmission with 5c-2v cable
- ezP2P™ Cloud Service without any complicated network setting
- ezLink™ for Instant Live Monitoring with Mac Address Input
- 2 x Typical PUSH Functions
  - PUSH Video Call to iPhone/iPad & Android Phone
  - PUSH Network Connection under Sensor Event
- POS Function up to 4 sets of POS Devices
- Startup Wizard for Easy Configuration
- Remote Monitoring by Remote S/W(CMS) & Smart Phone
- Talk-Back Function for 2-way communication with Smart Phone



[HVR-FE504]



[HVR-FE508/516]

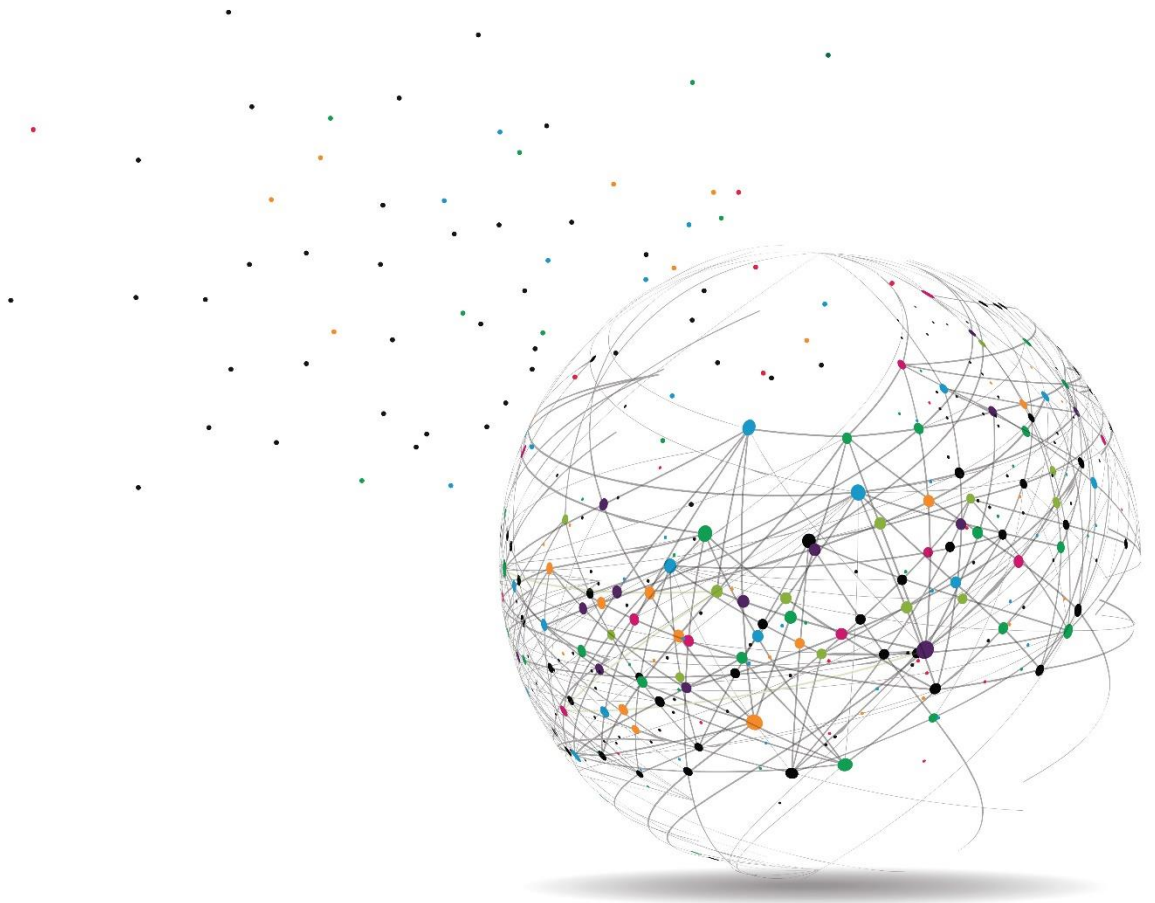
Model		HVR-FE504 (4CH)	HVR-FE508 (8CH)	HVR-FE516 (16CH)
Compression Algorithm		Video : H.264, Audio : ADPCM		
Max. HDD		1 x SATA HDD	2 x SATA HDD	4 x SATA HDD
Operating System		Embedded Linux		
Video	Input	4 Ch	8 Ch	16 Ch
	Format	HD-SDI / EX-SDI 1.0 / EX-SDI 2.0		
Video Mode		Digital		
Live Display		120/100 fps	240/200 fps	480/400 fps
Split Model		1 & 4	1, 4 & 9	1, 4, 9 & 16
Video Output	Monitor	HDMI & VGA & Analog Spot(CVBS)		
	Resolution	HDMI: 800x600, 1024x768, 1280x1024, 1920x1080 (Selectable)		
Recording Speed	1280x720(720P)	120 fps	240 fps	480 fps
	1920x1080(1080P)	60 fps	120 fps	240 fps
Recording Resolution	Digital	1280 x 720, 1920 x 1080		
Recording Mode		Continuous, Emergency, Motion, Schedule, Alarm, Panic		
Playback & Search	Speed	x1, x2, x4, x8, x16, x32, x64, x128		
	Channel & Resolution	1, 4, 9 & 16 ch @ 1080P		
	Function	Calendar, Date & Time, Event, Starting time, Last time		
Audio Input /Output		4 Ch / 1 Ch	8 Ch / 1 Ch	8 Ch / 1 Ch
Alarm input/ Output		4 Ch / 1 Ch	4 Ch / 1 Ch	4 Ch / 1 Ch
P/T/Z Control (RS-485)		Virtual Joystick control on screen by Mouse Pan/Tilt / Zoom / Focus / Iris by Keyboard		
UTC		4Ch UTC (EX-SDI)	8Ch UTC (EX-SDI)	16Ch UTC (EX-SDI)
LAN		Giga Ethernet (RJ45) Static, Dynamic & DDNS		
Network Function		1) Dual Stream (Local Recording & Network Transmission) 2) Network Bandwidth Control (25Kbps ~1000 Mbps) 3) Live Monitoring, Remote Playback and File backup( Triplex on Remote) 4) Time Synchronization by NTP Server ("pool.ntp.org") 5) Remote & E-Mail Notification, Remote System Reboot by IE, Remote PTZ Control 6) P2P Service (No Port forwarding required)		
Remote Management	Software	CMS & MMS (MV3000)		
	Web (IE)	Live Monitoring, Playback & System Configuration		
Backup Device		Local Backup by USB ODD, Network Backup by CMS, File Upload to FTP Server		
System Recovery after Power Failure		Auto-Reboot and Journaling File System		
Advanced Functions		1) Firmware Upgrade by USB & CMS over Network 2) Import & Export of Setting Value, Water-Mark, AVI File Backup 3) Quick Setup to designate Recording Period 4) HDD SMART Info (Model, Capacity, Bad Sector, Temperature, Used Period) 5) Warning Alarm for System Over-Temperature 6) Help Message for easy setup & Multi-Language support 7) Digital Zoom for both Live & VOD mode 8) Smart Search		
POS		Text-in Based (USB to Serial support, TCP/IP Network)		
System Operation		Front Button, IR Remote Controller, USB Mouse, Keyboard (Option)		
Power		12V x 5A D/C	12V x 5A D/C	12V x 7A D/C
Operating Temperature/ Humidity		5~40 °C / 20~90% RH		
Dimension (WxDxH)		264 x 245 x 44 (mm)	360 x 380 x 66 (mm)	
Certification		CE & FCC & KCC & WEEE, RoHS		

(\*) Specification is subject to change without prior notice.



**HANSE**

**NVR**



# PoE NVR

# HVR-FN5 series

Plug & Play with Built-in PoE (Max. 16ch)  
 IEEE 802.3 at : Auto Power Distribution to each PoE Port (Max. 30W/PoE Port)  
 ONVIF Compatible & Auto IP Camera Detection/Registration  
 Intelligent Dual(Main & Sub) Stream Recording/Display  
 System Performance Monitoring(Bandwidth & Network Status, etc.)  
 P2P Function that doesn't require Port Forwarding  
 iSCSI function Support – External HDD through Network  
 Smart Search – Multiple search by time & minutes' base  
 Link Local(Zero Configuration) Supports  
 H.264 I-Reference Supports



[HVR-FN504]



[HVR-FN508/516]

MODEL		HVR-FN504(4 Ch)	HVR-FN508 (8 Ch)	HVR-FN516 (16 Ch)
Max. HDD Bay		1 x SATA HDD	2 x SATA HDD	2 x SATA HDD
Operating System		Embedded Linux		
IP Camera	Channel	4 Ch	8 Ch + 1 Ch(additional)	16 Ch
	Protocol	ONVIF		
	No. of PoE	4 Ch	8 Ch	16 Ch
	PoE Type	100Mbps, 802.3at	100Mbps, 802.3at	1000Mbps, 802.3at
Display	Speed	120fps	270fps	480fps
	Screen Mode	1, 4	1, 4 & 9	1, 4, 9 & 16
Video-In		IP Camera (Up to 4K UHD)		
Video-Out	Monitor	Composite & VGA & HDMI		
	Resolution	HDMI: 800x600, 1024x768, 1280x1024, 1920x1080, 3840x2160 (4K) (Selectable)		
Recording Speed	CIF ~ 1080P	120fps	270fps	480fps
	1920P	120fps	270fps	480fps
	2160P	120fps	270fps	480fps
Recording Resolution		Main Stream(up to 4K) & Sub Stream		
Network bandwidth (Max)		40Mbps	80Mbps	80Mbps
Recording Modes		Continuous, Scheduled, Sensor-Activated & Motion Detection Recording Pre & Post Alarm Recording, Emergency Recording, Quick Backup		
Playback & Search	Speed	x1, x2, x4, x8, x16, x32, x64, x99		
	Ch & Resolution	1 & 4 : Main Stream, 9 & 16 : Sub Stream		
Function		Intelli-Search by Time Bar, Calendar (Date & Time) and Event Search		
Audio Input / Output		1 Ch / 1 Ch		
Alarm Input / Relay Output		4 Ch / 1 Ch		
P/T/Z Control		ONVIF	ONVIF	ONVIF
LAN		Gigabit Ethernet (RJ45) - Fixed IP, DHCP & DDNS		
Network Function		1) Dual-Stream (Local Recording & Network Transmission) 2) Dual-Recording(Live Display / Playback) 3) Live Monitoring, Remote Playback and File Backup (Triplex-on-Remote) 4) Time Synchronization by NTP Server ("pool.ntp.org") 5) Remote & E-Mail Notification, Remote System Reboot by IE, Remote PTZ Control 6) P2P Service (No Port forwarding required)		
Remote Management	Software	CMS & MMS (MV3000)		
	Web (IE)	Live Monitoring, Playback & System Configuration		
Backup Device		Local Backup by USB ODD, Network Backup by CMS, File Upload to FTP Server		
System Recovery after Power Failure		Auto-Reboot and Journaling File System		
Advanced Functions		1) Firmware Upgrade by USB & CMS over Network 2) Import & Export of Setting Value, Water-Mark, AVI File Backup 3) Quick Setup to designate Recording Period 4) HDD SMART Info (Model, Capacity, Bad Sector, Temperature, Used Period) 5) Warning Alarm for System Over-Temperature 6) Help Message for easy setup & Multi-Language support 7) Digital Zoom for both Live & VOD mode 8) Smart Search		
POS		Text-in Based (USB to Serial support, TCP/IP Network)		
System Operation		IR Remote Controller, USB Mouse, Keyboard (Option)		
Power		48V 1.36A D/C	110~240V A/C (180W)	110 ~240V A/C (280W)
Operating Temperature and Humidity		5~40 °C / 20~90% RH		
Dimension (WxDxH)		315 × 240 × 48 mm (1U)	385 × 315 × 52 mm (1U)	385 × 315 × 52 mm (1U)
Certification		CE & FCC & KCC & WEEE, RoHS		

(\*) Specification is subject to change without prior notice.



# PoE NVR

# HVR-FN6 series

Plug & Play with Built-in PoE (Max. 16ch)  
 IEEE 802.3 at : Auto Power Distribution to each PoE Port (Max. 30W/PoE Port)  
 ONVIF Compatible & Auto IP Camera Detection/Registration  
 Intelligent Dual(Main & Sub) Stream Recording/Display  
 System Performance Monitoring(Bandwidth & Network Status, etc.)  
 P2P Function that doesn't require Port Forwarding  
 iSCSI function Support – External HDD through Network  
 Smart Search – Multiple search by time & minutes' base  
 Link Local(Zero Configuration) Supports  
 H.264 I-Reference Supports



[HVR-FN604]



[HVR-FN608/616]

MODEL		HVR-FN604 (4 Ch)	HVR-FN608 (8 Ch)	HVR-FN616 (16 Ch)
Max. HDD Bay		2 x SATA HDD	4 x SATA HDD	4 x SATA HDD
Operating System		Embedded Linux		
IP Camera	Channel	4 Ch + 5 Ch(additional)	8 Ch + 1 Ch(additional)	16 Ch
	Protocol	ONVIF		
	No. of PoE	4 Ch	8 Ch	16 Ch
	PoE Type	100Mbps, 802.3at	100Mbps, 802.3at	1000Mbps, 802.3at
Display	Speed	270fps	270fps	480fps
	Screen Mode	1, 4 & 9	1, 4 & 9	1, 4, 9 & 16
Video-In		IP Camera (Up to 4K UHD) Composite & VGA & HDMI		
Video-Out	Monitor	HDMI: 800x600, 1024x768, 1280x1024, 1920x1080, 3840x2160 (4K) (Selectable)		
	Resolution			
Recording Speed	CIF ~ 1080P	270fps	270fps	480fps
	1920P	270fps	270fps	480fps
	2160P	270fps	270fps	480fps
Recording Resolution		Main Stream(up to 4K) & Sub Stream		
Network bandwidth (Max)		80Mbps	80Mbps	160Mbps
Recording Modes		Continuous, Scheduled, Sensor-Activated & Motion Detection Recording Pre & Post Alarm Recording, Emergency Recording, Quick Backup		
Playback & Search	Speed	x1, x2, x4, x8, x16, x32, x64, x99		
	Ch & Resolution	1 & 4 : Main Stream, 9 & 16 : Sub Stream		
	Function	Intelli-Search by Time Bar, Calendar (Date & Time) and Event Search		
Audio Input / Output		1 Ch / 1 Ch		
Alarm Input / Relay Output		4 Ch / 1 Ch	8 Ch / 1 Ch	16 Ch / 4 Ch
P/T/Z Control		ONVIF	RS-485 / ONVIF	RS-485 / ONVIF
LAN		Gigabit Ethernet (RJ45) - Fixed IP, DHCP & DDNS		
Network Function		1) Dual-Stream (Local Recording & Network Transmission) 2) Dual-Recording(Live Display / Playback) 3) Live Monitoring, Remote Playback and File Backup (Triplex-on-Remote) 4) Time Synchronization by NTP Server ("pool.ntp.org") 5) Remote & E-Mail Notification, Remote System Reboot by IE, Remote PTZ Control 6) P2P Service (No Port forwarding required)		
Remote Management	Software	CMS & MMS (MV3000)		
	Web (IE)	Live Monitoring, Playback & System Configuration		
Backup Device		Local Backup by USB ODD, Network Backup by CMS, File Upload to FTP Server		
System Recovery after Power Failure		Auto-Reboot and Journaling File System		
Advanced Functions		1) Firmware Upgrade by USB & CMS over Network 2) Import & Export of Setting Value, Water-Mark, AVI File Backup 3) Quick Setup to designate Recording Period 4) HDD SMART Info (Model, Capacity, Bad Sector, Temperature, Used Period) 5) Warning Alarm for System Over-Temperature 6) Help Message for easy setup & Multi-Language support 7) Digital Zoom for both Live & VOD mode 8) Smart Search		
POS		Text-in Based (USB to Serial support, TCP/IP Network)		
System Operation		IR Remote Controller, USB Mouse, Keyboard (Option)		
Power		48V 1.875A A/C (180W)	110~240V A/C (300W)	110 ~240V A/C (300W)
Operating Temperature and Humidity		5~40 °C / 20~90% RH		
Dimension (WxDxH)		385 × 315 × 52 mm (1U)	445 × 400 × 71 mm (1.5U)	445 × 400 × 71 mm (1.5U)
Certification		CE & FCC & KCC & WEEE, RoHS		

(\*) Specification is subject to change without prior notice.



# None PoE NVR

# HVR-FN616N

16Ch Real Time Display and Real Time Recording  
 ONVIF Compatible & Auto IP Camera Detection/Registration  
 Intelligent Dual(Main & Sub) Stream Recording/Display  
 System Performance Monitoring(Bandwidth & Network Status, etc.)  
 P2P Function that doesn't require Port Forwarding  
 iSCSI function Support – External HDD through Network  
 Smart Search – Multiple search by time & minutes' base  
 Link Local(Zero Configuration) Supports  
 H.264 I-Reference Supports



[HVR-FN616N]

MODEL		HVR-FN616N
Max. HDD Bay		4 x SATA HDD
Operating System		Embedded Linux
IP Camera	Channel	16 Ch
	Protocol	ONVIF
	No. of PoE	None
	Resolution	Up to 8M (4K )
Display	Speed	Real time
	Screen Mode	1, 4, 9, 16
Video-In		IP Camera (Up to 4K UHD)
Video-Out	Monitor	VGA & HDMI
	Resolution	1024x768, 1280x1024, 1920x1080, 2560x1440, 2560x1600, 3840x2160(4K) (Selectable)
Recording Speed	CIF ~ 1080P	480fps
	1920P	480fps
	2160P	480fps
Recording Resolution		Main Stream(up to 4K) & Sub Stream
<b>Throughput (Max. Bandwidth)</b>		<b>160Mbps</b>
Recording Modes		Continuous, Motion, Sensor, Continuous +Motion, Continuous +Sensor, Motion + Sensor Pre & Post Alarm Recording, Emergency Recording, Quick Backup
Playback & Search	Speed	x1, x2, x4, x8, x16, x32, x64, x99
	Ch & Resolution	1 & 4 & 9 & 16: Main Stream, More than 25channels mode : Sub Stream
	Function	Search by Time Bar, Calendar (Date & Time) and Event Search, Smart Search, Advanced Smart Search
Simultaneous Playback		Real time Playback
Sensor in /Relay Output		16Ch / 4 Ch
P/T/Z Control		RS-485, ONVIF
LAN		Gigabit Ethernet (RJ45) x 2EA, Fixed IP, DHCP & DDNS, DHCP server embedded
Network Function		1) Dual-Stream (Local Recording & Network Transmission) 2) Dual-Recording(Live Display / Playback) 3) Live Monitoring, Remote Playback and File Backup (Triplex-on-Remote) 4) Time Synchronization by NTP Server ("pool.ntp.org") 5) Remote & E-Mail Notification, Remote System Reboot by IE, Remote PTZ Control 6) P2P Service (No Port forwarding required)
Remote Management	Software	CMS & MV3000(Mobile App)
	Web (IE)	Live Monitoring, Playback & System Configuration
Backup Device		Local Backup by USB ODD, Network Backup by CMS, File Upload to FTP Server
System Recovery after Power Failure		Auto-Reboot and Journaling File System
Advanced Functions		1) Firmware Upgrade by USB & CMS over Network 2) Import & Export of Setting Value, Water-Mark, AVI File Backup 3) Easy Setup by Startup Wizard 4) HDD SMART Info (Model, Capacity, Bad Sector, Temperature, Used Period) 5) Tool for System Performance Monitoring at a glance 6) Help Message for easy setup & Multi-Language support 7) Digital Zoom for both Live & VOD mode 8) Smart Search
POS		Text-in Based (USB to Serial support, TCP/IP Network)
System Operation		Front Button, IR Remote Controller, USB Mouse, Keyboard (Option)
Power		110~240V A/C (80W)
Operating Temperature and Humidity		5~40 °C / 20~90% RH
Dimension (WxDxH)		445 × 400 × 71 mm (1.5U)
Certification		CE & FCC & KCC & WEEE, RoHS

(\*) Specification is subject to change without prior notice.





# None PoE NVR

# HVR-F736

ONVIF Compatible & Auto IP Camera Detection/Registration  
 Intelligent Dual(Main & Sub) Stream Recording/Display  
 System Performance Monitoring(Bandwidth & Network Status, etc.)  
 P2P Function that doesn't require Port Forwarding  
 iSCSI function Support – External HDD through Network  
 Smart Search – Multiple search by time & minutes' base  
 Various Connection Method depending on user/site  
 Link Local(Zero Configuration) Supports  
 H.264 I-Reference Supports

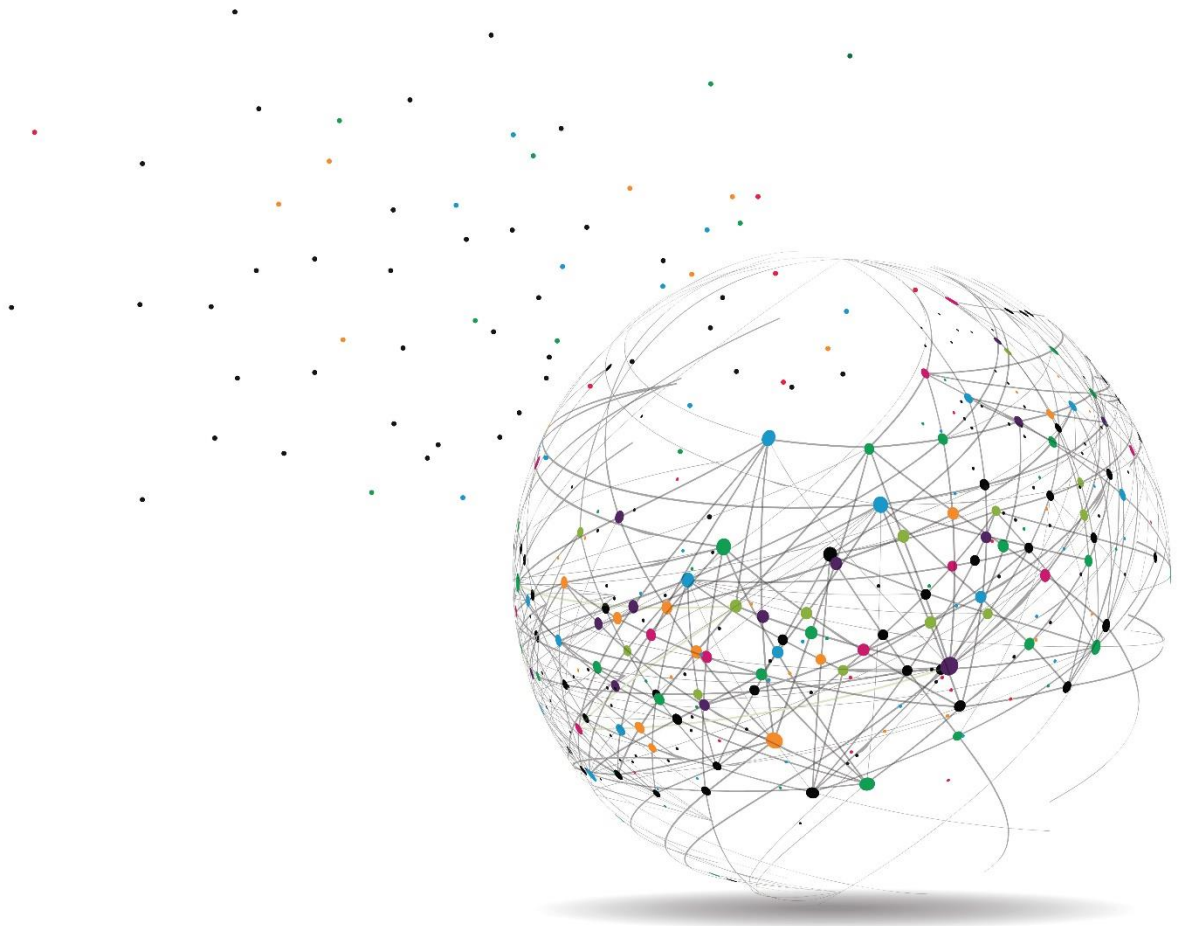


[HVR-F736]

MODEL		HVR-F736
Max. HDD Bay		4 x SATA HDD (8 HDD optional)
Operating System		Embedded Linux
IP Camera	Channel	36 Ch
	Protocol	ONVIF
	No. of PoE	None
	Resolution	Up to 8M (4K )
Display	Speed	Real time
	Screen Mode	1, 4, 9, 16, 25, 36
Video-In		IP Camera (Up to 4K UHD)
Video-Out	Monitor	VGA & HDMI
	Resolution	1024x768, 1280x1024, 1920x1080, 2560x1440, 2560x1600, 3840x2160(4K) (Selectable)
Recording Speed	CIF ~ 1080P	1080fps
	1920P	1080fps
	2160P	1080fps
Recording Resolution		Main Stream(up to 4K) & Sub Stream
<b>Throughput (Max. Bandwidth)</b>		<b>200Mbps</b>
Recording Modes		Continuous, Motion, Sensor, Continuous +Motion, Continuous +Sensor, Motion + Sensor Pre & Post Alarm Recording, Emergency Recording, Quick Backup
Playback & Search	Speed	x1, x2, x4, x8, x16, x32, x64, x99
	Ch & Resolution	1 & 4 & 9 & 16: Main Stream, More than 25channels mode : Sub Stream
	Function	Search by Time Bar, Calendar (Date & Time) and Event Search, Smart Search, Advanced Smart Search
Simultaneous Playback		Real time Playback
Sensor in /Relay Output		16Ch / 4 Ch
P/T/Z Control		RS-485, ONVIF
LAN		Gigabit Ethernet (RJ45) x 2EA, Fixed IP, DHCP & DDNS, DHCP server embedded
Network Function		1) Dual-Stream (Local Recording & Network Transmission) 2) Dual-Recording(Live Display / Playback) 3) Live Monitoring, Remote Playback and File Backup (Triplex-on-Remote) 4) Time Synchronization by NTP Server ("pool.ntp.org") 5) Remote & E-Mail Notification, Remote System Reboot by IE, Remote PTZ Control 6) P2P Service (No Port forwarding required)
Remote Management	Software	CMS & MV3000(Mobile App)
	Web (IE)	Live Monitoring, Playback & System Configuration
Backup Device		Local Backup by USB ODD, Network Backup by CMS, File Upload to FTP Server
System Recovery after Power Failure		Auto-Reboot and Journaling File System
Advanced Functions		1) Firmware Upgrade by USB & CMS over Network 2) Import & Export of Setting Value, Water-Mark, AVI File Backup 3) Easy Setup by Startup Wizard 4) HDD SMART Info (Model, Capacity, Bad Sector, Temperature, Used Period) 5) Tool for System Performance Monitoring at a glance 6) Help Message for easy setup & Multi-Language support 7) Digital Zoom for both Live & VOD mode 8) Smart Search
POS		Text-in Based (USB to Serial support, TCP/IP Network)
System Operation		Front Button, IR Remote Controller, USB Mouse, Keyboard (Option)
Power		DC 12V
Operating Temperature and Humidity		5~40 °C / 20~90% RH
Dimension (WxDxH)		420 x 400 x 88 mm
Certification		CE & FCC & KCC & WEEE, RoHS

(\*) Specification is subject to change without prior notice.





**HANSE**

**HANSE SOLUTIONS Co., Ltd.**

3F, 54, Yuljeon-ro 101 beon-gil, Jangan-gu, Suwon-si, Gyeonggi-do, 16361 Korea

**Tel :** +82-70-7809-7109    **Fax :** +82-03-3441-7109

**Email :** [jessica@hansesolutions.com](mailto:jessica@hansesolutions.com) / [sales@hansesolutions.com](mailto:sales@hansesolutions.com)