



HHC-HT924

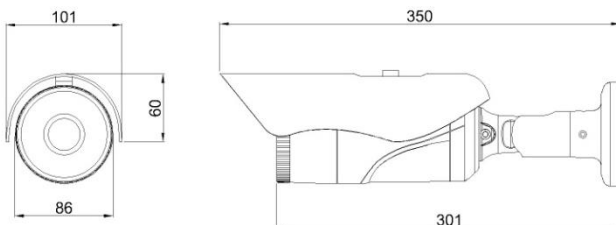
VISIBLE & LWIR THERMAL FUSION

CAMERA

FEATURES

- Visible Sensor : 1/2.8" 2.13M Progressive Scan CMOS
- LWIR Sensor : 80x80 Pixels, LWIR (8~14um)
- Thermal Network Camera with Visible Sensor
- Supports Visible Mode & Threshold Fusion Mode & α-Blanding Mode
- FOV – Horizontal 90°
- Temperature Range 0 °C to 120 °C
- Noise Equivalent Temperature Difference (NETD) : Detector NETD < 100mK
- Conformant with ONVIF Profile-s
- True Day & Night
- 4 PCS High Power IRLED
- IP67 Weatherproof
- Option : PoE (802.3af)

DIMENSION



CAMERA SPECIFICATIONS

| | |
|-------------------------------------|---|
| Signal Format | NTSC/PAL (Selectable) |
| Visible Image Sensor | 1/2.8" 2.13M Progressive Scan CMOS |
| Visible Total Pixels | 1945(H) x 1109(V) = 2,157,005 (Pixels) |
| Visible Effective Pixels | 1945(H) x 1097(V) = 2,133,665 (Pixels) |
| Visible Sensor Pixel Size | 2.9um x 2.9um |
| Visible Minimum illumination (F1.2) | Color : 0.5 B/W : 0.1 Lux |
| Visible Iris Control | MANUAL |
| LWIR Total Pixels | 80(H) x 80(V) = 6,400 (Pixels) |
| LWIR Sensor Pixel Size | 34um x 34um |
| LWIR Spectral Range | LWIR, Wavelength (8 ~ 14um) |
| Video Output Mode | Main Stream : H.264 Sub Stream : H.264 / MJPEG |
| Video Resolution | Main stream 30fps : 1920x1080, 1280x720 Sub stream 30fps : 640 x480 |
| Bit Rate Control | CBR / VBR |
| Ethernet | RJ45 10M/100M self -adaptive Ethernet port |
| Network Protocol | TFP/IP, UDP, ICMP, HTTP, HTTPS, FTP, DHCP, DNC, DDNS, RTP, RTSP, RTCP, NTP, UPnP, SMTP, SNMP, IGMP, 802.1X, QoS, IPv6 |
| Standard | ONVIF (PROFILE S), Dual Stream |
| Day & Night | AUTO |
| Mode | Visible Mode & Threshold Fusion Mode & Iron α-Blanding Mode & Rainbow α-Blanding Mode |
| FOV-Horizontal | 90° |
| Temperature Range | 0 °C ~ 120 °C |
| Thermal Sensitivity (NETD) | Detector NETD<100mK |
| Lens Mount Type | Board-in |
| IRLED | 4 PCS High Power IRELD |
| Power Supply | DC 12V (±10%), Option : PoE (802.3af) |
| Power Consumption | LED Off : Max. 3.5W / LED On : Max. 12.0W |
| Operating Temperature | -10°C ~ +50°C |
| Operating Humidity | Less than 90% |
| Dimension | 101(Ø) x 350H)mm |
| Weight | Approx. 1.45kg (W/ Sunshield & Bracket) |



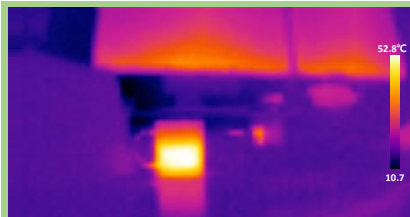
HHC-HT924

VISIBLE & LWIR THERMAL FUSION
CAMERA

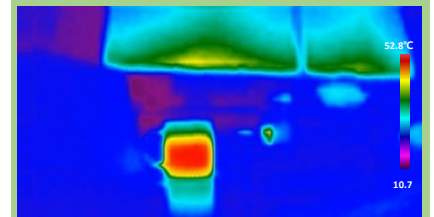
LWIR IMAGE



LWIR MONO IMAGE

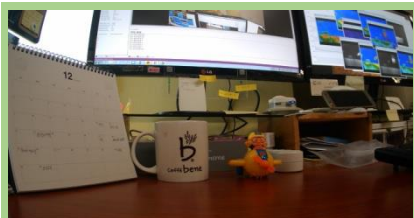


LWIR IRON IMAGE



LWIR RAINBOW IMAGE

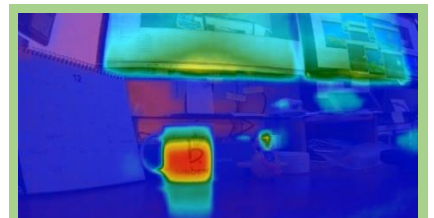
LWIR FUSION IMAGE



CMOS IMAGE



IRON α -Blanding



RAINBOW α -Blanding



CMOS IMAGE



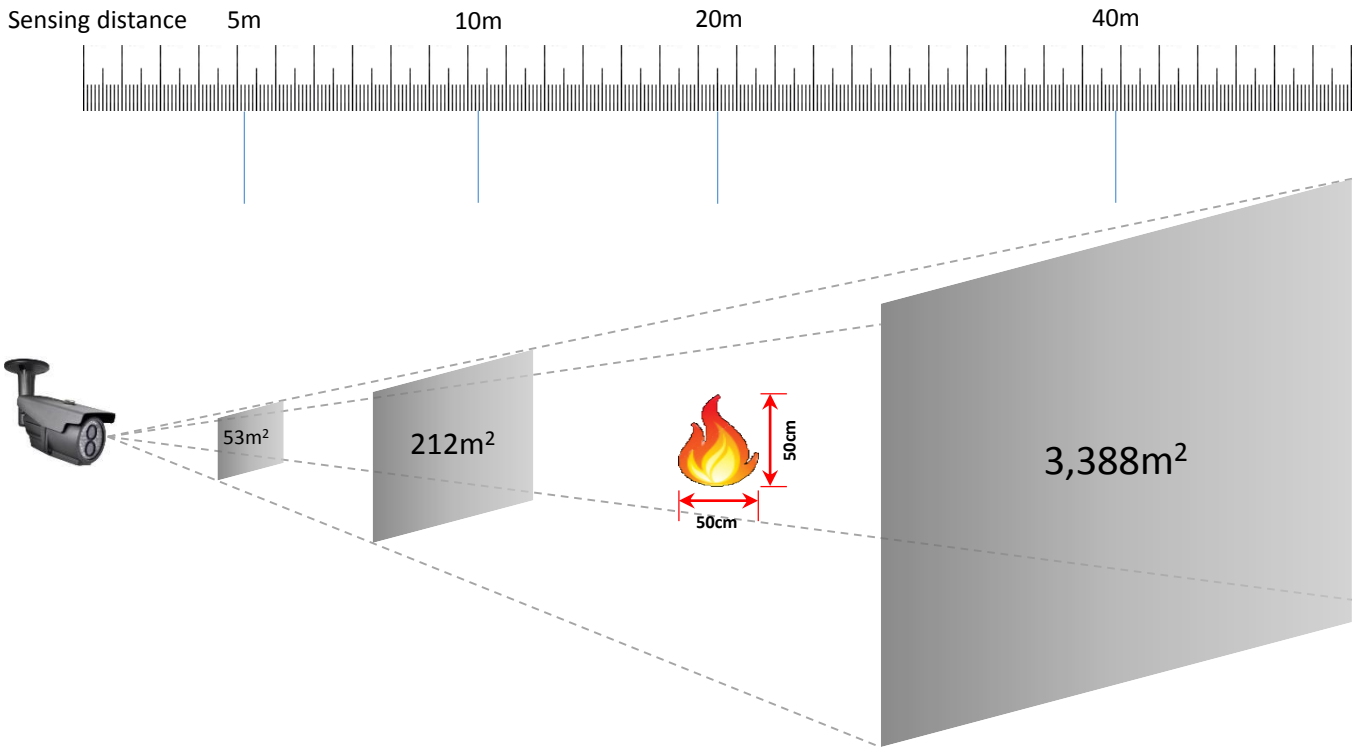
Threshold Mode FUSION



HHC-HT924

VISIBLE & LWIR THERMAL FUSION
CAMERA

SENSING DISTANCE



| Measuring distance | 5m | 10m | 15m | 20m | 25m | 30m | 35m | 40m |
|----------------------------------|----|-----|-----|-----|-------|-------|-------|-------|
| Monitored area (m ²) | 53 | 212 | 476 | 847 | 1,324 | 1,906 | 2,594 | 3,388 |
| Recognize size per pixel (cm) | 13 | 25 | 38 | 50 | 63 | 75 | 88 | 100 |